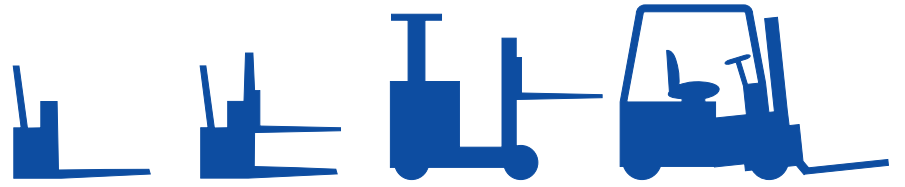


# Latec®



# UPRIGHT PARTS

10/05

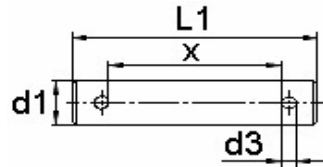
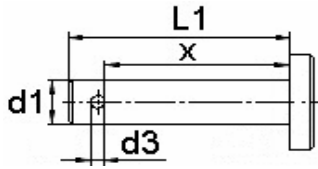


# WORLDWIDE SOURCE

## INDEX

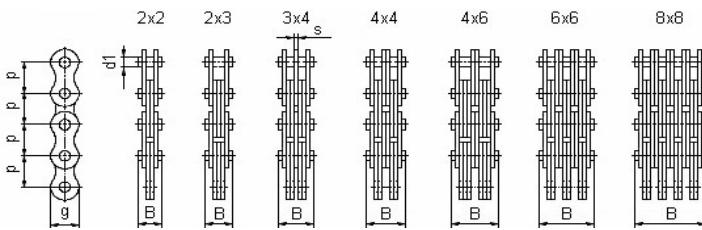
### CHAINS

Page



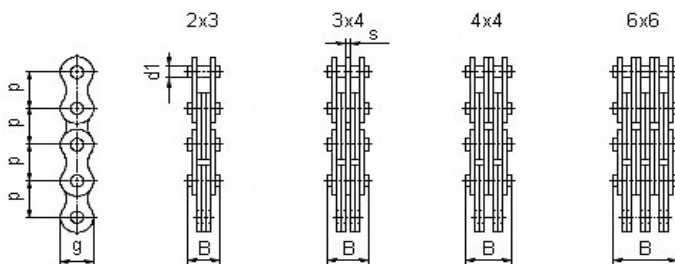
Connecting pins for chains

6



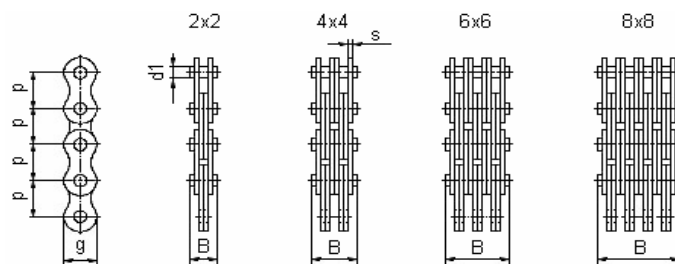
Leaf chains heavy series ( BL / LH )

7



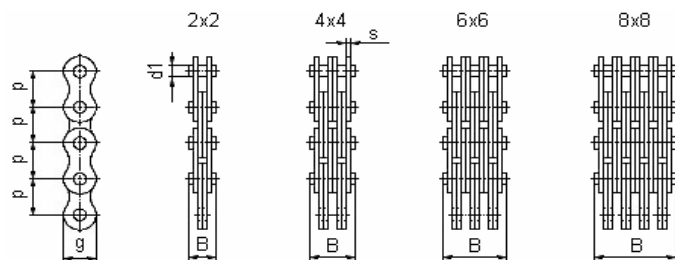
Leaf chains ACC. to industry standard

8



Leaf chains light series (AL) ACC.  
to american standard

8



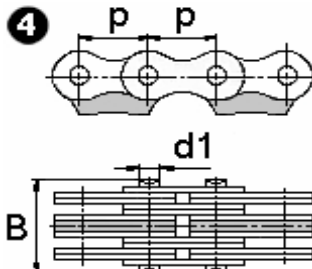
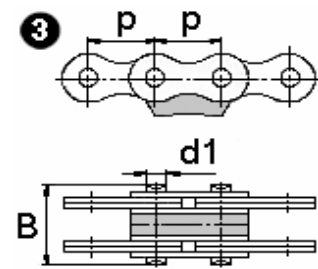
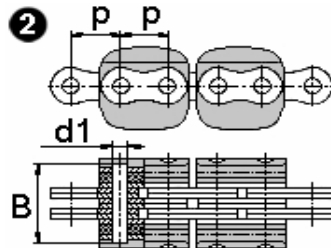
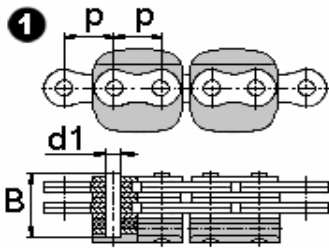
Leaf chains light series (LL) ACC.  
to european standard

9

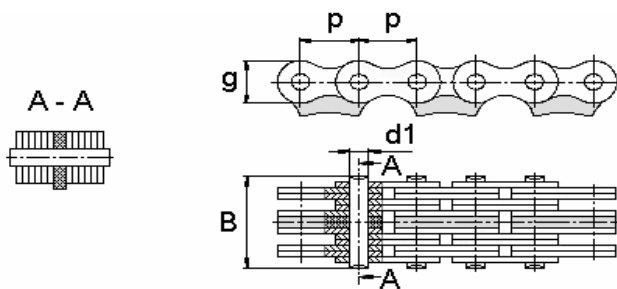
## INDEX

### CHAINS

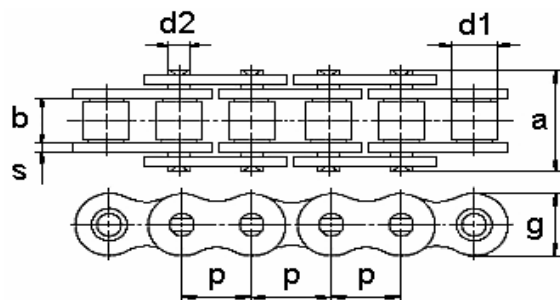
Page



LINDE Special leaf chains **10**



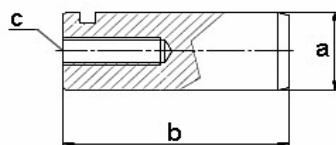
JUNGHEINRICH Special leaf chains **11**



Simplex roller chains  
(Heavy Duty and High Endurance Chain) **12**

### TILT CYLINDER PINS

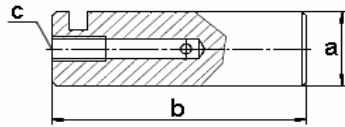
Page



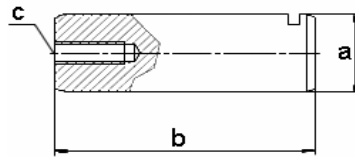
TYP A Tilt cylinder pins **13**

## INDEX

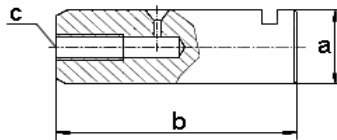
TILT CYLINDER PINS	Page
--------------------	------



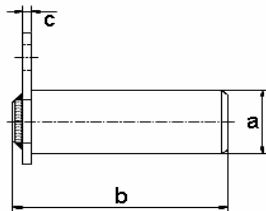
TYP A -1 Tilt cylinder pins 13



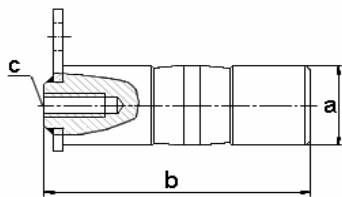
TYP A -2 Tilt cylinder pins 14



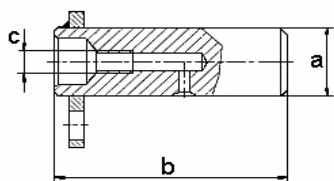
TYP A -3 Tilt cylinder pins 14



TYP B Tilt cylinder pins 15



TYP C Tilt cylinder pins 15

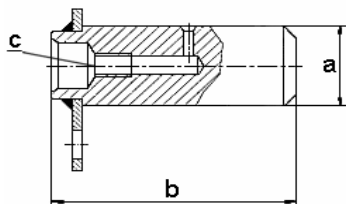


TYP D Tilt cylinder pins 16

## INDEX

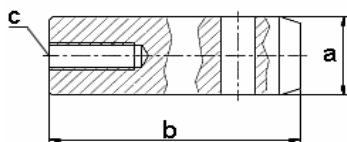
### TILT CYLINDER PINS

Page



TYP D -1 Tilt cylinder pins

16

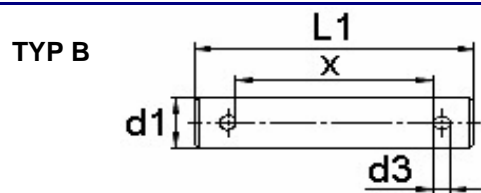
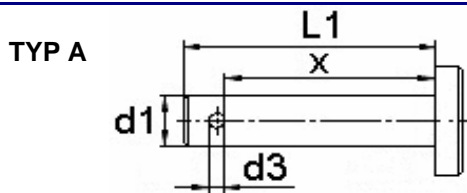


TYP E Tilt cylinder pins

17



## CONNECTING PINS FOR CHAINS

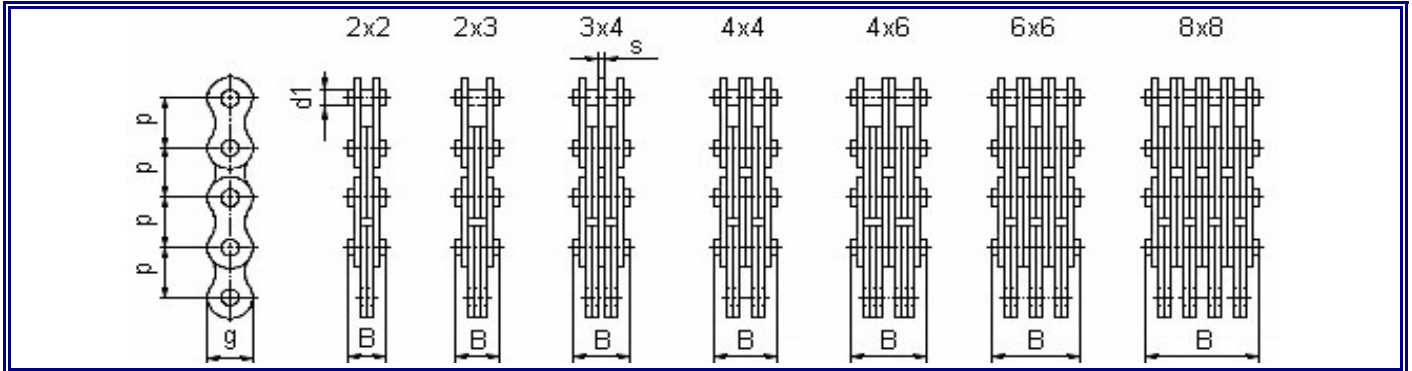


Chain type	Typ	d1 max.	d3	L1 max.	x min.	Part -No.:
BL 422/AL 522	B	5,08	1,6	17,0	10,8	0649368
BL 423	B			18,9	12,7	0649369
BL 434	B			23,2	17,0	0649370
BL 444/AL 544	B			25,2	19,0	0649371
BL 446	B			39,4	31,7	0649372
BL 466/AL 566	B			33,3	27,0	0649373
BL 488/AL 588	B			41,8	35,5	0649374
BL 522	B	5,94	2,0	19,4	12,8	0649375
BL 523	B			21,6	15,0	0649376
BL 534	B			29,1	22,5	0649377
BL 544/AL 644	B			29,1	22,5	0649378
BL 546	A			38,0	32,0	0649379
BL 566/AL 666	B			42,0	34,0	0649380
BL 588/AL 688	B			49,3	42,5	0649381
BL 623	B	7,92	2,0	24,0	17,0	0649382
BL 634	B			34,0	27,0	0649383
BL 644/AL 844	B			40,7	30,0	0649384
BL 646	B			47,7	38,0	0649385
BL 666/AL 866	B			53,7	43,0	0649386
BL 688/AL	B	7,92	3,2	67,2	56,5	0649387
BL 823	B	9,53	3,2	40,5	30,0	0649388
BL 834	B			43,7	33,0	0649389
BL 844/AL 1044	B			47,7	37,0	0649390
BL 846	B			62,0	46,5	0649391
BL 866/AL 1066	B			67,0	54,5	0649392
BL 888/AL 1088	B			80,3	69,5	0649393
BL 1023	B	11,1	4,0	48,8	36,0	0649394
BL 1034	A			52,5	45,5	0649395
BL 1044/AL 1244	B			56,6	44,2	0649396
BL 1046	B			71,0	57,5	0649397
BL 1066/AL 1266	B			75,6	63,2	0649398
BL 1088/AL 1288	B			92,4	79,9	0649399
BL 1223	B	12,7	4,0	46,9	34,5	0649400
BL 1234	B			58,6	46,2	0649401
BL 1244/AL 1444	B			64,4	50,0	0649402
BL 1246	B			76,0	63,5	0649403
BL 1266/AL 1466	B			87,8	75,3	0649404
BL 1288/AL 1488	B			111,1	98,6	0649405
BL 1423	B	14,27	4,0	51,1	38,7	0649406
BL 1434	B			64,6	52,2	0649407
BL 1444	B			71,1	58,6	0649408
BL 1446	B			84,2	71,7	0649409
BL 1466	B			97,7	85,1	0649410
BL 1623	B	17,46	5,0	60,6	43,1	0649411
BL 1634	B			75,5	58,0	0649412
BL 1644	B			82,9	65,7	0649413
BL 1646	B			97,4	79,9	0649414
BL 1666	B			112,2	94,6	0649415
BL 1688	B			141,6	124,0	0649416

Chain type	Typ	d1 max.	d3	L1 max.	x min.	Part -No.:
F 12 - 44	B	4,45	1,6	22,2	16,0	0649435
F 12 - 66	B			29,2	23,0	0649436
F 15 - 44	B	5,08	1,6	21,1	15,0	0649437
F 15 - 66	B			28,2	22,0	0649438
F 19 - 44	B	5,72	2,0	25,5	17,6	0649439
F 19 - 66	B			32,7	24,7	0649440
F 25 - 44	B	8,28	2,0	43,4	33,0	0649441
F 25 - 66	B	8,28	3,2	56,0	44,0	0649442
F 25 - 88	B			64,7	54,0	0649443
F 31 - 44	B	10,19	3,2	43,7	33,0	0649444
F 31 - 66	B			57,7	47,0	0649445
F 31 - 88	B			72,7	62,0	0649446
F 38 - 44	B	14,63	4,0	60,6	48,2	0649447
F 38 - 66	B			81,6	69,2	0649448
F 38 - 88	B			102,6	90,2	0649449
F 44 - 22	B	15,9	4,0	42,1	29,7	0649450
F 44 - 44	B			67,5	55,0	0649451
F 44 - 66	B			92,7	80,2	0649452
F 44 - 88	B			118,5	106,0	0649453
F 50 - 22	B	17,81	5,0	51,9	34,4	0649454
F 50 - 44	B			77,5	59,9	0649455
F 50 - 66	B			104,0	86,4	0649456
F 50 - 88	B			131,5	113,9	0649457
F 63 - 22	B	22,89	6,3	60,8	39,9	0649458
F 63 - 44	B			94,3	73,3	0649459
F 63 - 66	B			127,6	106,6	0649460
F 63 - 88	B			161,1	140,1	0649461
F 76 - 44	B	29,23	6,3	112,5	91,5	0649462
F 76 - 66	B			154,5	133,5	0649463
F 76 - 88	B			195,2	174,2	0649464
F 19 V - 44	B	6,5	2,0	30,2	23,0	0649465
F 19 V - 66	B			40,3	31,4	0649466



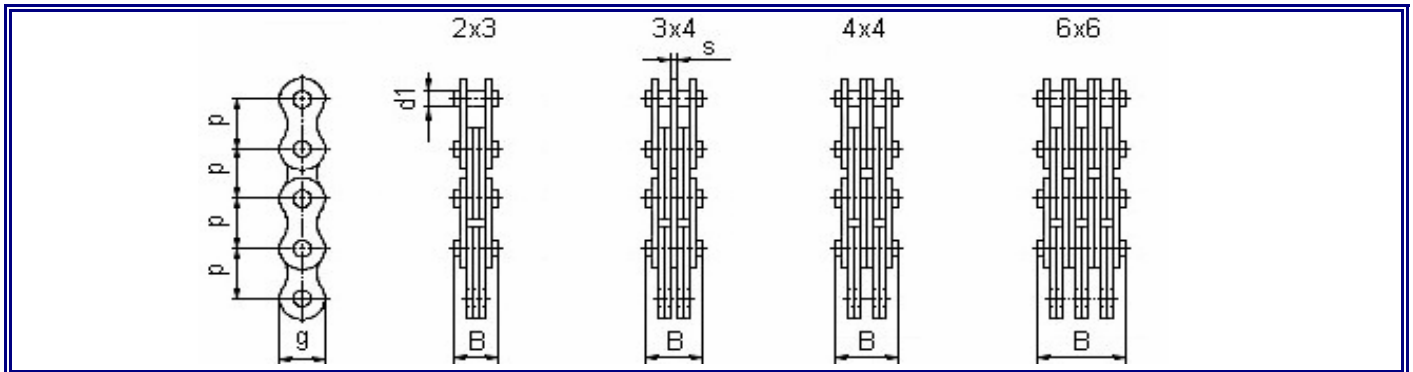
## LEAF CHAINS HEAVY SERIES ( BL / LH )



Chain type	ISO Ref. No.	Pitch p		Lacing	Pin Dia. d1 (mm)	Link Height g (mm)	Plate Thickness s (mm)	Pin Length B (mm)	Breaking Load FB / N	Part -No.:
		Inch	mm							
BL 423	LH 0823	1/2"	12,7	2 x 3	5,08	11,6	2,0	12,4	22 200	0649276
BL 434	LH 0834			3 x 4				16,7	33 300	0649277
BL 444	LH 0844			4 x 4				18,9	44 400	0649278
BL 446	LH 0846			4 x 6				22,8	44 400	0649279
BL 466	LH 0866			6 x 6				27,1	66 600	0649280
BL 523	LH 1023	5/8"	15,875	2 x 3	5,94	14,6	2,4	14,8	33 400	0649281
BL 534	LH 1034			3 x 4				19,9	50 100	0649282
BL 544	LH 1044			4 x 4				22,5	66 800	0649283
BL 546	LH 1046			4 x 6				27,4	66 800	0649285
BL 566	LH 1066			6 x 6				32,0	100 200	0649286
BL 623	LH 1223	3/4"	19,05	2 x 3	7,92	17,8	3,2	19,7	48 900	0649287
BL 634	LH 1234			3 x 4				26,4	73 400	0649288
BL 644	LH 1244			4 x 4				29,5	97 800	0649289
BL 646	LH 1246			4 x 6				35,9	97 800	0649290
BL 666	LH 1266			6 x 6				42,4	146 900	0649291
BL 822	LH 1622	1"	25,4	2 x 2	9,53	23,6	3,9	21,34	84 500	0649318
BL 823	LH 1623			2 x 3				24,6	84 500	0649292
BL 834	LH 1634			3 x 4				33,1	126 800	0649293
BL 844	LH 1644			4 x 4				37,4	169 000	0649294
BL 846	LH 1646			4 x 6				45,5	169 000	0649295
BL 866	LH 1666			6 x 6				54,0	253 600	0649296
BL 1023	LH 2023	1 1/4"	31,75	2 x 3	11,1	29,2	4,7	28,6	115 600	0649297
BL 1034	LH 2034			3 x 4				38,7	173 400	0649298
BL 1044	LH 2044			4 x 4				43,6	231 200	0649299
BL 1046	LH 2046			4 x 6				53,3	231 200	0649300
BL 1066	LH 2066			6 x 6				63,3	346 800	0649301
BL 1223	LH 2423	1 1/2"	38,1	2 x 3	12,7	34,4	5,5	33,6	151 200	0649302
BL 1234	LH 2434			3 x 4				45,5	226 800	0649303
BL 1244	LH 2444			3 x 4				51,2	302 400	0649304
BL 1246	LH 2446			4 x 6				62,7	302 400	0649305
BL 1266	LH 2466			6 x 6				74,5	453 600	0649306
BL 1288	LH 2488			8 x 8				97,8	604 800	0649307
BL 1423	LH 2823	1 3/4"	44,45	2 x 3	14,27	40,8	6,3	38,2	191 300	0649308
BL 1434	LH 2834			3 x 4				51,7	287 000	0649309
BL 1444	LH 2844			4 x 4				58,2	382 600	0649310
BL 1446	LH 2846			4 x 6				71,5	382 600	0649311
BL 1466	LH 2866			6 x 6				85,0	574 000	0649312
BL 1623	LH 3223	2"	50,8	2 x 3	17,46	47,9	7,1	42,1	289 100	0649313
BL 1634	LH 3234			3 x 4				57,0	433 700	0649314
BL 1646	LH 3246			4 x 6				78,9	578 200	0649315
BL 1666	LH 3266			6 x 6				95,0	867 400	0649316
BL 1688	LH 3288			8 x 8				125,6	1 156 400	0649317

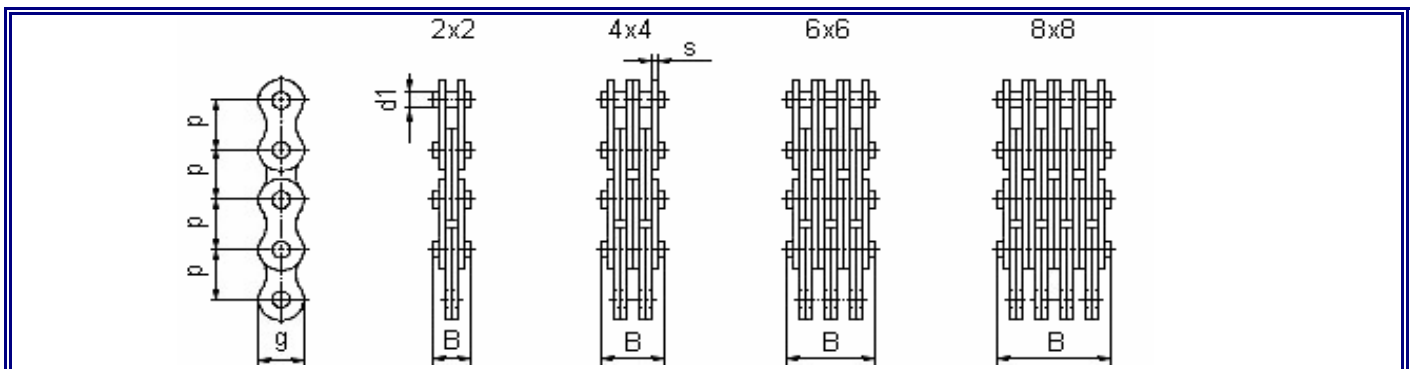


## LEAF CHAINS ACC.TO INDUSTRY STANDARD



Chain type	ISO Ref. No.	Pitch p		Lacing	Pin Dia. d1 (mm)	Link Height g (mm)	Plate Thickness s (mm)	Pin Length B (mm)	Breaking Load FB / N	Part -No.:
		Inch	mm							
F 19 V - 44	-	3/4"	19,05	4 x 4	6,5	15,2	2,35	22,4	71 000	0649319
F 19 V - 66	-			6 x 6				32,3	106 000	0649320
834 (SK 507)	-	1"	25,4	3 x 4	10,85	23,4	3,05 / 4,0	28,4	125 000	0649321
432 (SK 508)	-			6 x 6				44,4	250 000	0649322

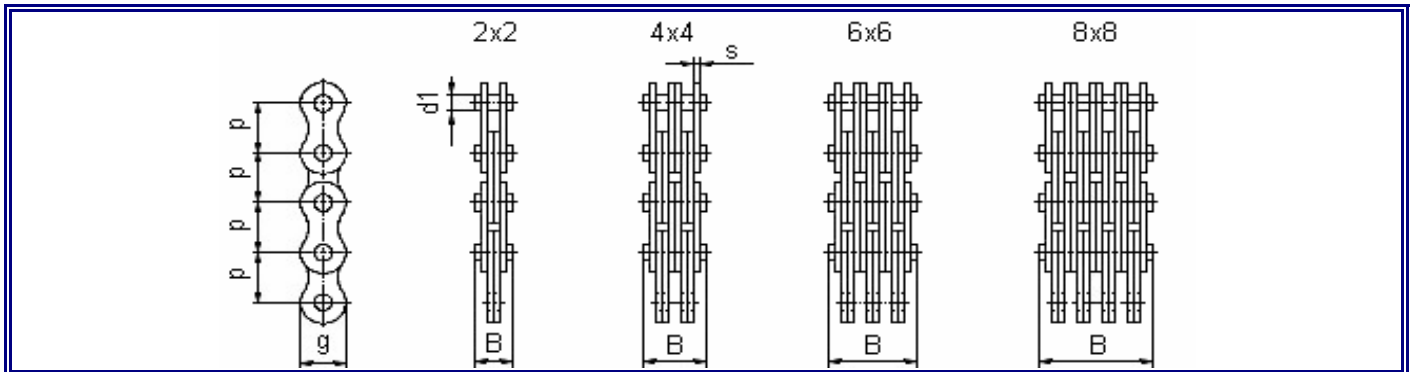
## LEAF CHAINS LIGHT SERIES (AL) ACC.TO AMERICAN STANDARD



Chain type	ISO Ref. No.	Pitch p		Lacing	Pin Dia. d1 (mm)	Link Height g (mm)	Plate Thickness s (mm)	Pin Length B (mm)	Breaking Load FB / N	Part -No.:
		Inch	mm							
AL 422	-	1/2"	12,7	2 x 2	3,96	10,2	1,5	8,1	14 100	0649350
AL 444	-			4 x 4				14,5	28 200	0649351
AL 466	-			6 x 6				20,9	42 300	0649352
AL 522	-	5/8"	15,875	2 x 2	5,08	12,8	2	10,5	22 000	0649353
AL 544	-			4 x 4				18,7	44 000	0649354
AL 566	-			6 x 6				27,1	66 000	0649355
AL 622	-	3/4"	19,05	2 x 2	5,94	14,8	2,4	12,6	37 000	0649356
AL 644	-			4 x 4				22,5	63 000	0649357
AL 666	-			6 x 6				32,0	95 400	0649358
AL 688	-			8 x 8				43,0	127 200	0649359
AL 844	-	1"	25,4	4 x 4	7,92	20,5	3,1	30,8	113 400	0649360
AL 866	-			6 x 6				44,4	170 100	0649361
AL 1044	-	1 1/4"	31,75	4 x 4	9,53	25,7	3,9	37,3	177 000	0649362
AL 1066	-			6 x 6				54,0	265 500	0649363
AL 1266	-	1 1/2"	38,1	6 x 6	11,1	29,4	4,7	63,3	381 000	0649364
AL 1288	-			8 x 8				83,0	508 000	0649365
AL 1466	-	1 3/4"	44,45	6 x 6	12,7	36,0	5,5	74,5	558 000	0649366
AL 1666	-	2"	50,8	6 x 6	14,27	41,2	6,3	85,0	642 000	0649367

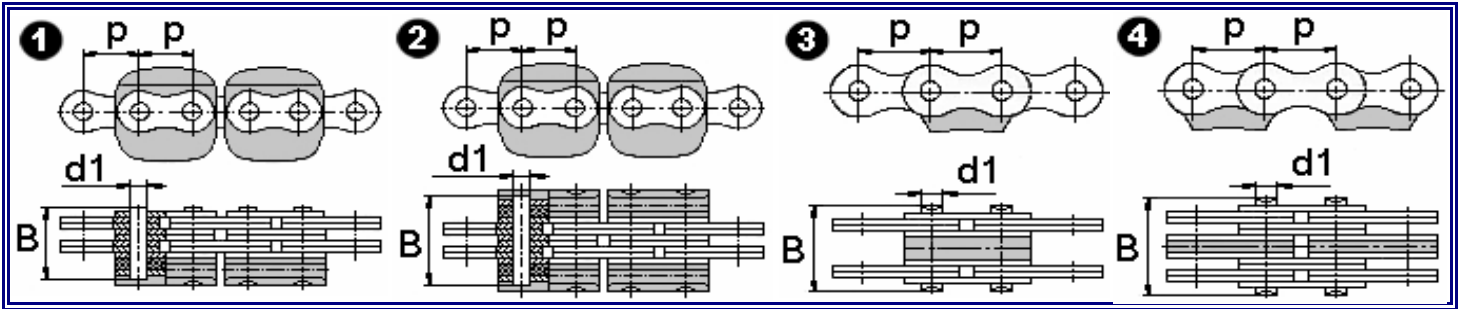


## LEAF CHAINS LIGHT SERIES (LL) ACC.TO EUROPEAN STANDARD



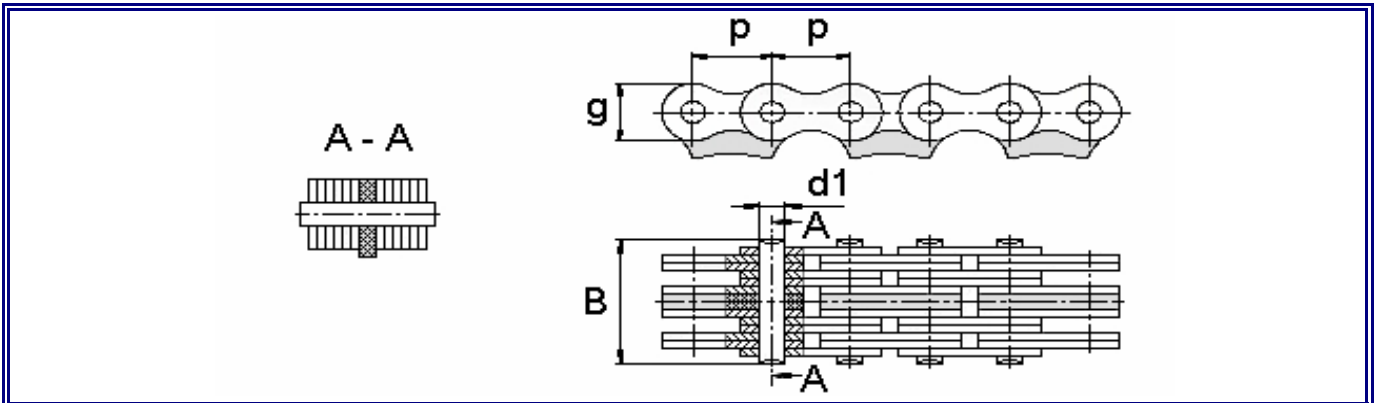
Chain type	ISO Ref. No.	Pitch p		Lacing	Pin Dia. d1 (mm)	Link Height g (mm)	Plate Thickness s (mm)	Pin Length B (mm)	Breaking Load FB / N	Part-No.:
		Inch	mm							
F 12 - 44	LL 0844	1/2"	12,7	4 x 4	4,45	10,4	1,5	15,1	36 000	0649323
F 12 - 66	LL 0866			6 x 6				21,4	54 000	0649324
F 15 - 44	LL 1044	5/8"	15,875	4 x 4	5,08	12,8	1,5	15,1	44 800	0649325
F 15 - 66	LL 1066			6 x 6				21,4	67 200	0649326
F 19 - 44	LL 1244	3/4"	19,05	4 x 4	5,72	15,9	1,8	18,0	59 000	0649327
F 19 - 66	LL 1266			6 x 6				25,2	88 500	0649328
F 25 - 44	LL 1644	1"	25,4	4 x 4	8,28	20,5	3,0	28,2	120 000	0649329
F 25 - 66	LL 1666			6 x 6				40,5	180 000	0649330
F 25 - 88	LL 1688			8 x 8				54,2	240 000	0649331
F 31 - 44	LL 2044	1 1/4"	31,75	4 x 4	10,19	25,7	3,5	33,3	190 000	0649332
F 31 - 66	LL 2066			6 x 6				48,2	285 000	0649333
F 31 - 88	LL 2088			8 x 8				63,2	380 000	0649334
F 38 - 44	LL 2444	1 1/2"	38,1	4 x 4	14,63	33,0	5,0	46,9	320 000	0649335
F 38 - 66	LL 2466			6 x 6				68,3	480 000	0649336
F 38 - 88	LL 2488			8 x 8				89,7	640 000	0649337
F 44 - 22	LL 2822	1 3/4"	44,45	2 x 2	15,9	36,0	6,0	29,4	200 000	0649338
F 44 - 44	LL 2844			4 x 4				54,7	400 000	0649339
F 44 - 66	LL 2866			6 x 6				80,2	600 000	0649340
F 50 - 22	LL 3222	2"	50,8	2 x 2	17,81	41,2	6,3	32,5	250 000	0649341
F 50 - 44	LL 3244			4 x 4				59,1	500 000	0649342
F 50 - 66	LL 3266			6 x 6				85,4	750 000	0649343
F 50 - 88	LL 3288			8 x 8				112,0	1 000 000	0649344
F 63 - 22	LL 4022	2 1/2"	63,5	2 x 2	22,89	48,0	8,0	39,5	355 000	0649345
F 63 - 44	LL 4044			4 x 4				73,1	710 000	0649346
F 63 - 66	LL 4066			6 x 6				106,5	1 065 000	0649347
F 76 - 44	LL 4844	3"	76,2	4 x 4	29,24	62,0	10,0	91,2	1 120 000	0649348
F 76 - 66	LL 4866			6 x 6				131,0	1 680 000	0649349

## LINDE SPEZIAL LEAF CHAINS



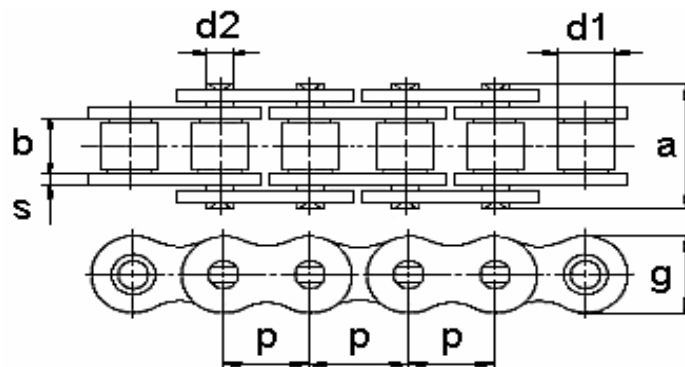
	Ref.	Pitch		Lacing	Pin Length B (mm)	Dia. d1 (mm)	Model	Type	Part -No.:
		Inch	mm						
	1	3/4	19,05	2 x 3	26,5	7,92	335 335-02 350-03 350-03 350-03	E14-20 E14-16 E16-18C E16-18P H12-20	<b>0608616</b>
	1	1	25,4	4 x 4	35,0	8,28	336 336-02 336-03 351-01 351-02 351-03	E20-30 E20-30 E25-30 H20-30 H20-30 H20-35	<b>0608621</b>
	2	1	24,5	4 x 6	52,0	8,28	351-01 351-02	H20-30 H20-30	<b>0608619</b>
	2	1	25,4	6 x 6	59,5	8,28	332 352-01 352-02 352-03 352-04	H35-40 H35-45 H35-45 H35-45 H35-45	<b>0608620</b>
	4	1	25,4	4 x 4	57,0	9,53	351-01 351-02 351-03	H20-30 H20-30 H20-30	<b>0419363</b>
	4	1	25,4	6 x 6	61,0	9,53	325 331	E20-30 H20-30	<b>0653228</b>
	4	1	25,4	6 x 6	68,0	9,53	336 336-02 336-03 351-03	E20-30 E20-30 E25-30 H20-35	<b>0608618</b>
	4	1	25,4	8 x 8	78,0	9,53	332 352-01 352-02 352-03 352-04	H35-40 H35-45 H35-45 H35-45 H35-45	<b>0653226</b>
	3	1	25,4	4 x 4	61,0	9,53	115-C 115-C-02 335-02 335-02 335-02 350-03	R10-14C R10-14C E14-20 E14-20C E14-20P H12-20	<b>0653227</b>

## JUNGHEINRICH SPEZIAL LEAF CHAINS



	Pitch p		Lacing	Dia. d1 (mm)	Link Height g (mm)	Plate Thickness s (mm)	Pin Length B (mm)	Part -No.:
	Inch	mm						
	3/4	19,05	4 x 4	5,8	15,8	1,8	22,0	<b>0018073</b>
	3/4	19,05	6 x 6	6,3	18,2	2,4	36,0	<b>0019386</b>
	3/4	19,05	8 x 8	6,3	18,2	2,3	45,0	<b>0958224</b>
	3/4	19,05	10 x 10	6,0	18,2	2,4	55,0	<b>0025489</b>
	1	25,4	3 x 4	9,3	24,0	4,0	40,0	<b>0526506</b>
	1	25,4	4 x 4	9,3	24,0	4,2	44,0	<b>0866690</b>

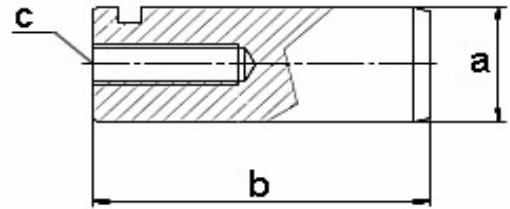
## SIMPLEX ROLLER CHAINS (Heavy Duty and High Endurance Chains)



Chain type	Pitch p		Inner Width b (mm)	Dia. d1 (mm)	Pin Dia. d2 (mm)	Linkplate Thickness s (mm)	Link Height g (mm)	Conn Pin Length a (mm)	Part -No.:
	Inch	mm							
60 H	3/4"	19,05	12,57	11,91	5,94	3,05	17,7	28,8	0984360
80 H	1"	25,4	15,75	15,88	7,92	4,0	23,5	35,9	0984368
100 H	1 1/4"	31,75	18,9	19,05	9,53	4,7	29,2	42,8	0984373
120 H	1 1/2"	38,1	25,22	22,23	11,1	5,5	34,4	53,0	0984378
140 H	1 3/4"	44,45	25,22	25,4	12,7	6,3	40,8	56,6	0984383
160 H	2"	50,8	31,55	28,58	14,27	7,0	47,8	67,2	0984388
200 H	2 1/2"	63,5	37,85	39,68	19,84	9,5	60,0	84,0	0984394

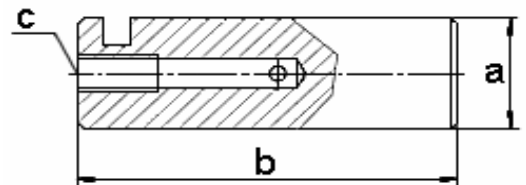
## TILT CYLINDER PINS

typ A



a	b	c	P/N	used on	a	b	c	P/N	used on
35,0	95,0	M10x1,25	0759904	Linde					
35,0	105,5	M8	0839692	Linde					
35,0	129,0	M12x1,25	0747369	Linde					

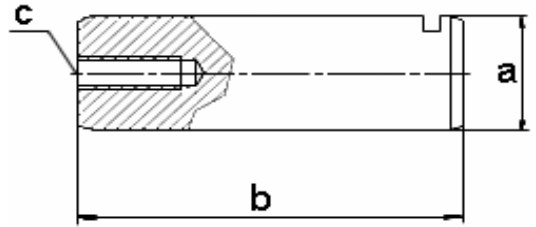
typ A -1



a	b	c	P/N	used on	a	b	c	P/N	used on
30,0	95,0	M10x1	0839688	Linde					

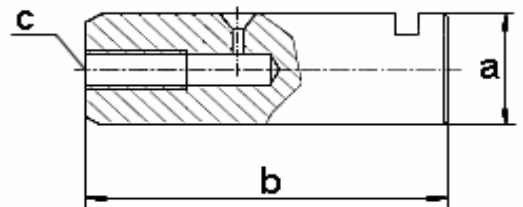
## TILT CYLINDER PINS

typ A - 2



a	b	c	P/N	used on	a	b	c	P/N	used on
42,0	131,0	M12x1,25	0752770	Linde					

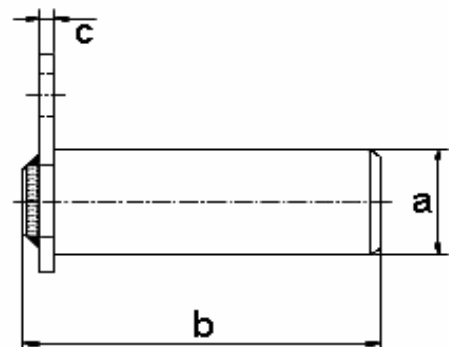
typ A - 3



a	b	c	P/N	used on	a	b	c	P/N	used on
30,0	90,0	M10x1	0751915	Linde					

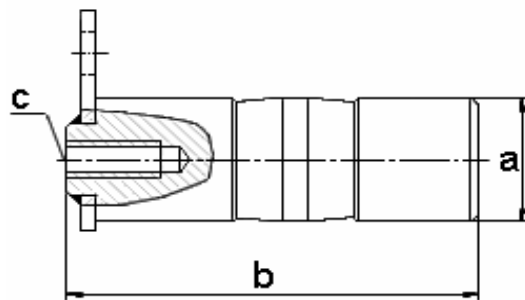
## TILT CYLINDER PINS

typ B



a	b	c	P/N	used on	a	b	c	P/N	used on
30,0	94,0	4,0	0232459	Toyota					
30,0	131,0	4,0	0232460	Toyota					
30,0	139,0	5,0	0856767	Toyota					

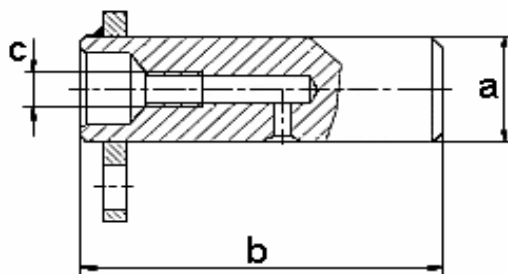
typ C



a	b	c	P/N	used on	a	b	c	P/N	used on
35,0	108,0	M10x1,25	0839434	Toyota					

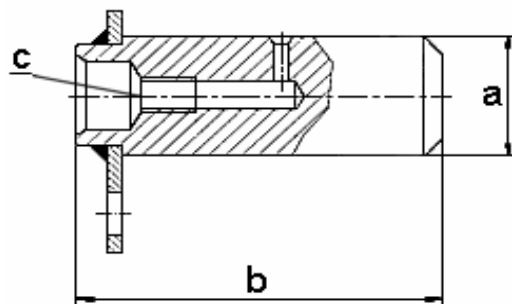
## TILT CYLINDER PINS

typ D



a	b	c	P/N	used on	a	b	c	P/N	used on
30,0	95,0	M10x1	0839689	Nissan					
35,0	99,3	M10x1	0839691	Nissan					
35,0	100,0	M10x1	0820912	Komatsu					

typ D-1



a	b	c	P/N	used on	a	b	c	P/N	used on
35,0	100,0	M10x1	0821331	Komatsu					
40,0	175,0	M10x1	0821677	Komatsu					



